

## LOCATIONS



## CONSTRUCTION OFFICES

Lodi	209 334-0790
Merced	209 984-5202
Modesto	209 523-0734
Sonora	209 984-5202

[WWW.GEORGEREED.COM](http://WWW.GEORGEREED.COM)

P.O. Box 4760  
Modesto, CA 95352



## CONSTRUCTION

## A LOT RIDES ON IT



## GEORGE REED INC.

LODI • MERCED • MODESTO • SONORA

SERVING CALIFORNIA'S  
CENTRAL VALLEY  
AND THE MOTHERLODE  
FOR OVER 60 YEARS

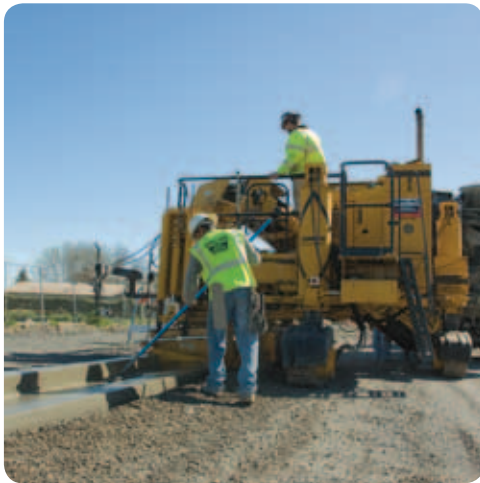
ASPHALT



From the initial breaking of fresh ground to the final lift of asphalt paving, George Reed, Inc.'s experienced managers and crew can build your project and leave you with a quality job.

With over 60 years experience in performing public projects, our high standards in quality of materials satisfies the specifications of local, state, and federal agencies.

CONCRETE



George Reed, Inc. can perform many facets of your project including:

- Rough Grading
- Storm Drain
- Finish Grade
- Concrete Curb & Gutter
- Concrete Sidewalk
- Aggregate Base
- Asphalt Concrete Paving



EARTHWORK



Commercial

Large and small retail parking lots and related off site roadwork.



Residential

New subdivisions, roadways, and existing roadway and parking lot maintenance.



Highways and Freeways



Sutter Creek Bypass